

RECREATION GROUND :: BATH

MR. HYLTON CLEAVER'S  
**INTERNATIONAL XV.**

V.

**BATH**

THURSDAY, 14th SEPTEMBER, 1950

KICK-OFF 6.15 p.m.

in aid of  
**BATH RUGBY MEMORIAL FUND**



PRICE

SIXPENCE

SOUVENIR PROGRAMME

**Bath** (Blue, White & Black).**Mr. Hylton Cleaver's International XV.** (White)

15 P. Sullivan	F.B.	A H. W. Pedlow	[London Irish, Kent, London Counties and Irish Trials]
14 R. Hambly	R.W.	B T. G. H. Jackson	[London Scottish, Army, Barbarians and Scotland]
13 G. Eglington	R.C.	C Glyn Rowlands	[London Welsh, English Trials, Welsh Trials]
12 K. Wilcox	L.C.	D M. Terry	[Penzance and Newlyn, Bath, Cornwall and Stanley's XV.]
11 W. Williams	L.W.	E J. A. Gregory	[Blackheath, Bristol, Gloucestershire and England]
10 G. Addenbrooke	<i>Outside Half</i>	F M. J. Daly	[Harlequins, Moseley, Middlesex and Ireland]
9 ■ M. Hanna	<i>Scrum Half</i>	G P. W. Sykes	[Wasps, Eastern Counties, London, Barbarians and England]
8 J. Roberts	} <i>Front Row</i>	H Martin Jackson	[Harlequins, Oxford University, London Counties, and Barbarians]
7 † F. Hill		I A. P. Henderson	[Cambridge University, Edinburgh University and England]
6 T. Smith		J David Shields	[Middlesex Hospital, London Counties, Middlesex and English Trials]
5 ■ L. Harter	} <i>Middle Row</i>	K J. R. Matthews ( <i>Capt.</i> )	[Harlequins, London, Barbarians and England]
4 J. Dingle		L F. J. Huskisson	[O.M.T's, Middlesex, London Counties, Barbarians and England]
3 ■ T. Lewis	} <i>Back Row</i>	M Ray Crouch	[Rosslyn Park, Surrey, London Counties and English Trials]
2 G. Brown		N M. J. Turner	[Blackheath, Kent, London Counties, Barbarians and England]
1 ■ A. Lewis ( <i>Capt.</i> )		O D. J. O'Brien	[London Irish, Barbarians, London Counties and Ireland]

† International ■ County

Referee—Mr. CYRIL GADNEY.

Kick-off 6.15 p-m.

Touch Judges—Mr. R. E. PRESCOTT (English Selector) and Mr. HARRY DAVIES  
[Oxford Univ., Harlequins, Middx. and England]

BATH FOOTBALL CLUB.

SEASON 1949—50



*Photo by T. C. Leaman, Corridor, Bath.*

## FROM THE PRESIDENT.



Mr. W. T. DAVIS

Once again, I have been invited to write a few lines for the souvenir programme. Last year I did so as an ordinary member of the club. This year I proudly occupy the position of its President and, in this capacity I extend, on behalf of the Bath F.C., every good wish to all junior clubs for a happy and successful season.

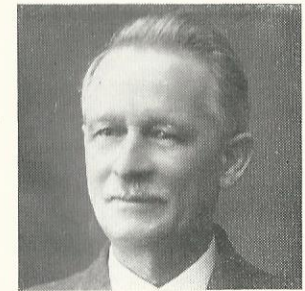
Although my knowledge of junior rugby in the old days cannot compare with that of veterans like our good friends, Tommy Davis and W. F. Dolman (both of whom have done so much for the game) my personal recollections go back quite a few years—Oldfield Park (the “cherry and whites”) playing on Beechen Cliff and their rivalry with Walcot (then renting the Horse Show Ground) which was as keen as that between Bath and Bristol, St. Stephens sharing the Kensington Meadows with the River Avon before the ground was raised higher above flood level, Stotherts on distant Odd Down. Some of the clubs of those days—Batheaston and District comes to mind—have gone but others have taken their place. But always, amidst the whirl of change and as firm as the Rock of Gibraltar, has stood the one and only Combe Down.

Not only have the clubs themselves changed but also the spirit. As with the Bath F.C. itself, the standard of play has improved enormously from those days when the “Knock-out Cup” was indeed well named! Rivalry is as keen as ever on the field but artificial stimulation is no longer necessary. There is far more “mixing” between friend and foe and infinitely more good fellowship. As elsewhere, local rugby has firmly resisted the hysteria and false values of commercialism and has become each year more and more of a **game**.

This—particularly the increase in open play—has I think been due in some measure to the change of code by Bath's two largest schools—King Edward's and City of Bath—and it is most agreeable to note the number of their old boys who have figured amongst the ex-junior players in the Bath and Somerset XV's of late. May Bath become even more a Bath team. I write this without the slightest intention of slighting our players who reside outside the City. Far from it. It is only natural that, when skilled rigger men “come West” they should wish to join a leading first-class club. We are proud that so often their choice falls upon us. We welcome them and note with gratitude and pleasure how soon they become absorbed into our club. But let us see to it that the challenge of the local-born player remains as strong as ever. The future of Bath rigger lies with our schools and junior players. They have a duty towards us and we fully realise that we have many duties towards them. And the most important of these is to see they have grounds on which to play.

That is the object of the Memorial Fund for the benefit of which Mr. Hylton Cleaver has brought another team of famous players to play Bath. We thank him and them for their response to our appeal and assure them that the cause is a worthy one.

Writing personally, I have no wish to see large crowds of young men and boys on the Recreation Ground content with watching and shouting. I want to see them playing themselves and I think it makes little difference what sort or code they play so long as they play in a manly way. But games cannot be played without pitches and there is a great shortage of them—particularly rugby pitches. In many parts of the country, our game is neither well nor even fairly treated by local authorities whose slogan appears to be “If nobody is making anything out of it then it can't be sport!” We intend to secure the “right to play” for all junior rigger players in this district by providing them with a well-equipped ground with proper changing accommodation and an adequate number of pitches. I cannot imagine a more fitting memorial to those of our players who gave their lives in the last war. Once again, let us remember them. More than that, let us remember their gallantry and follow them in that great principle of true sportsmanship, sacrifice—not self.



Mr. W. F. DOLMAN

. . . . And after the match—what better than a fireside chair  
with pipe and soft music . . . .

**DUCK SON & PINKER Ltd.**

THE MUSIC SPECIALISTS

**PULTENEY BRIDGE, BATH**

Telephone 567.5

For **BUILDING AND DECORATIVE WORKS**

Consult :—

**MANNINGS**

**1 & 2 Wood Street, Queen Square, BATH**

Telephone 4766

Estimates Free