

OFFICIAL PROGRAMME

Price THREEPENCE

BRISTOL

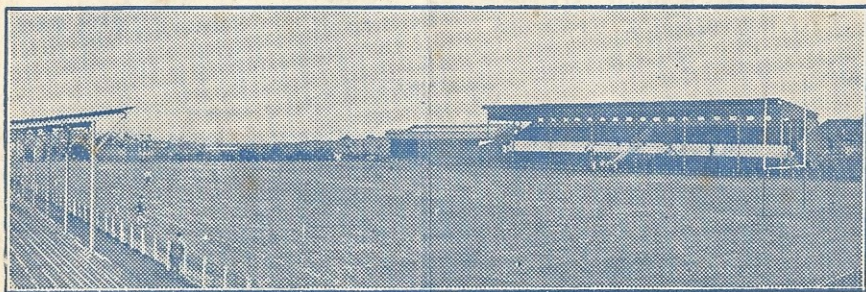


FOOTBALL

RUGBY **CLUB** FOOTBALL UNION

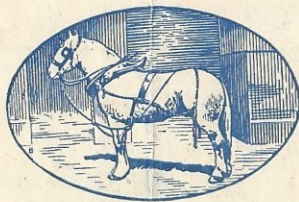
Memorial Ground, Filton Avenue

SEASON 1947-48



(Bristol Evening World Photo)

GEORGES' _____



BRISTOL BEERS

OUR VISITORS

To-day's match is certain to be keen, let us hope that it will be skilful. Both sides are capable of playing interesting and open Rugby, the sort of game spectators like to see and players to play in. There is a tendency in these matches between neighbouring clubs to attach too much importance to the result and too little importance to the character of the play. The players become too keen, infringements too frequent, the game folds up, the referee eagerly overstresses his importance and the match is ruined. But there is no need for this to happen this afternoon, the relationship between the two sides is most affectionate, and there doesn't seem much to choose between the calibre of the contending teams. Last Saturday Bath lost in London to St. Mary's Hospital and Bristol lost in South Wales to Llanelli, two places where it is not unusual to lose. It appears from reports that our Bristol XV played above their usual form and were unlucky to lose. The same team has been selected for this afternoon's match and will, we hope, show equally good form, and provide that comforting thing, a home win. We are pleased to see the Bath XV here to-day and wish them a good match and a successful season.

ON NOVEMBER 8th

On November 8th our 1st XV are playing Bedford away, and Bristol United are playing Berry Hill away. In order that our supporters shall see some Rugby on that day, the Committee have arranged two matches, one from 2.30 to 3.30 and the other from 3.30 to 4.40. The first match will most likely be Cotham Grammar School 1st XV v. City of Bath 1st XV, and the second match will be a Bristol Combination match which will be selected by the Combination Committee. We ask our supporters to come to these matches to see for themselves how the game is going in the Schools and in the Combination. Admission is to be free, so that there should be a good attendance. The schoolboys' match should be well worth watching. You will notice how admirably suited the game is for young people about 16 or 17. It develops them physically, it teaches them self-control, it selects the right type, for cowards and egoists cannot play it. In school games there is a total absence of sharp practice and crafty efforts to beat the referee. The game of Rugby originated in a school, and it is in school games that you see the game played in the proper spirit. In these games, too, the referee is a person of no importance, usually one of the masters. Please turn up in large numbers to support the efforts of the masters who train them and the boys who play.

Visit the

BERNADON CAFE

Proprietor : P. S. COTTRELL

504 GLOUCESTER ROAD

ONE MINUTE FROM THE MEMORIAL GROUND

BREAKFASTS · LUNCHEONS · TEAS · SUPPERS
SNACKS · GRILL · AT REASONABLE PRICES

BRISTOL v. BATH

SATURDAY, October 18th, 1947

BRISTOL

Colours—Blue and White

Full Back

(A) M. HILL

Threequarters

Right Wing (B) G. TUCKER

Right Centre (C) B. ROWSELL

Left Centre (D) R. PEARCE

Left Wing (E) G. GREEN

Half Backs

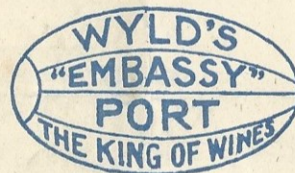
Outside Half (F) R. H. THOMAS

Scrum Half (G) E. C. THOMAS

Referee :

G. WARDEN

(London)



BATH

Colours—White

Full Back

J. ARNOLD

Threequarters

Right Wing H. LEEK

Right Centre I. GOODHAND

Left Centre K. O'SHAUGHNESSY

Left Wing T. HICKS (Capt.)

Half Backs

Outside Half J. H. BAILEY

Scrum Half N. HALSE

Kick-off

3.15 p.m.

Forwards (H) L. J. GRIFFIN

(I) F. HILL

(J) G. GIBBS

(K) D. WILTON

(L) R. REDMAN

(M) D. BENDALL

(N) G. HOGARTH

(O) D. PRATTEN

Forwards J. MESSER

M. J. HOWELL

G. REID

G. S. BROWN

H. GARDINER

A. HIGGINS

A. TODD

K. WEISS

RUGGER QUIZ

Q. 1: A player throws in the ball from the wrong place. Should the touch judge keep his flag up?

A. 1: No, the touch judge is responsible only for seeing that a player of the proper team throws the ball in and that he has both feet in touch (Law 11).



Q. 2: A spectator at a Rugby Match disagrees with the Referee's decision. What should he do?

A. 2: Smoke a pipe of soothing ROYAL SEAL (3/6 oz.) tobacco till he feels better. Besides "it's cheaper to smoke a pipe."

THE BAND

The Band that is playing to you to-day is that of the 9th Cadet Battalion, the Gloucestershire Regiment, by permission of the Commanding Officer. Please give generously to the collectors.

VISIT OF BRISTOL XV. TO NANTES

The Nantes Club have invited the Bristol Club to visit Nantes on November 11th, a fête day in France to play them. They have suggested that our players fly to France on November 10th, play the match on November 11th and fly back on November 12th. The party must be limited to 20. Naturally our players are enthusiastic about the trip, so are the officials who are likely to go. If formalities can be overcome the match will be on.

GAS MANTLES

The Committee wish to thank those supporters who were good enough to send gas mantles for the pavilion on the spare pitch. We now have enough to carry on for some time.

CUTTINGS FROM FRENCH PAPERS

M. Henri Picherit, the President of the Stade Nantes Club, who was in charge of the French XV from Nantes and Cognac, has been good enough to send the Bristol Club some Press cuttings written by M. Léon Poiriez, who announced the visiting team over the loud-speaker at Bristol. We believe that our supporters will be interested in what he says. Freely translated it runs thus:—If we refer once more to the hotly disputed matches against Cardiff and Bristol it is certainly not to refer to the result, or to speak once more of the exceptional atmosphere created by the unbelievable enthusiasm of a crowd the like of which is unknown to us, but to state what in the opinion of M. Picherit have been the lessons learnt from the two matches. First, we do not know how to pass the ball in France, we throw it anywhere, whilst the British players ensure that the ball is so carefully given that it is sure to reach another player, then our players have no sense of position; thirdly, we lack finish, we can start movements, but we are unable to finish them off as we do not foresee the end of the movement.

M. Picherit asks the sports papers to voice in the name of the Sportsmen of Nantes an expression of respectful homage to the most courteous and competent officials of the Bristol and Cardiff Clubs.

NEXT MATCH

Bristol United v. Berry Hill, Saturday, October 25th, 3.15 p.m.

MARTELL'S BRANDY

FOR ALL IMPORTANT OCCASIONS

THREE STAR 37/- per bottle.

CORDON BLEU 47/- per bottle